

MINIATURE PRESSURE SWITCH

DIAPHRAGM TYPE



IPS-PS-09

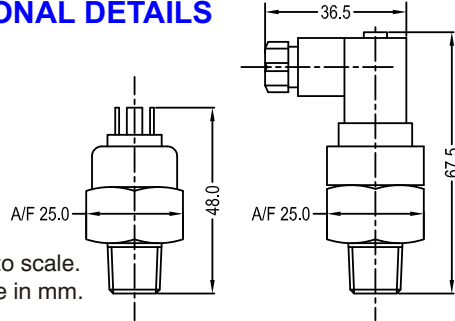
SPECIAL FEATURES

- COMPACT DESIGN
- HIGH RANGES
- WEATHERPROOF (OPTIONAL)
- BEST SUITABLE FOR OEM

APPLICATIONS

- HYDRAULIC & PNEUMATIC EQUIPMENTS
- AUTOMOBILES & EARTH MOVERS

DIMENSIONAL DETAILS



Notes : • Drawings are not to scale.
• All Dimensions are in mm.



TECHNICAL SPECIFICATION FOR STANDARD VERSION

Repeatability	± 2% of F. S.
Sensing Element	Piston Actuated Diaphragm
Sensing Element Material	Neoprene
Process Connection & Body Material	¼" BSP (M) & Stainless Steel
Over Pressure Limit	130% of F. S.
Switch	1 SPST (1 NO Contact Only)
Switch Rating	5A @ 250 VAC / 24 VDC
Electrical Terminals	Spade Terminals
Differential	10% to 20% of F.S.
Maximum Process Temperature	100°C
Ambient Temperature	-10 to 60°C

HOW TO ORDER

BASIC MODEL

RANGE

Ordering Code	Range (bar)	Ordering Code	Range (bar)
10	1 to 10	40	5 to 70
20	2 to 30	50	10 to 100
30	4 to 50		

BODY MATERIAL

R STAINLESS STEEL (Standard) S AISI 316 SS L AISI 316L SS

SENSING ELEMENT

N NEOPRENE (Standard) S AISI 316 SS T TEFLON

PROCESS CONNECTION

1BM 1/8" BSP (M) 1NM 1/8" NPT (M) 2BM 1/4" BSP (M) (Standard) 2NM 1/4" NPT (M)

OPTIONS

F1 EXTENSION CABLE - 1 Meter F2 EXTENSION CABLE - 2 Meters
DN DIN CONNECTOR WITH IP 65

Note : Modifications may take place and materials specified may be replaced by others without prior notice due to continuous developments.

IPS-PS-09

XX
OR
XXX

X

X

XXX

XX



Industrix Precise Solutions Private Limited

Room No – 303, Bhumika Residency, Plot No-21, Sector-20, Roadpali, Kalamboli, Panvel (Tal.), Raigad (Dist.), Maharashtra, India – 410218.

Mobile: +91 99309 98399 / +91 99674 97447

E-mail: admin@ipspl.in / sales@ipspl.in Website: www.ipspl.in

CIN : U52399MH2021PTC368555